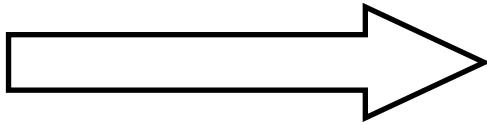

If any families are interested in our farm community, Black Water Acres, you can direct them to:

Arc Erie County: 1-833-272-3743
intake@arceriecounty.org
(Ask for admissions/intake)

How to make your donation:



**IF YOU'RE INTERESTED IN
RESERVING A FOURSOME FOR THE
TOURNAMENT, PLEASE REACH
OUT TO KATIE:**

Katlynn Dehr
WRM Homes for Autism
Call/Text: 716-912-5630
Email: wrmhomes@gmail.com

PAYMENT METHODS:

CASH OR MONEY ORDER

venmo

@WRMHOMES



venmo

PayPal
Giving Fund

HTTPS://WWW.PAYPAL.COM/US/
FUNDRAISER/CHARITY/1379918

Check
payable to:

WRM HOMES FOR AUTISM



**DROP OFF OR MAIL
DONATIONS TO:**

WRM Homes for Autism
4701 Southwestern Blvd.
Building A
Hamburg, NY 14075
Office: 716-649-3499
Call/Text: 716-912-5630 (Katie)
Email: wrmhomes@gmail.com

Contact us for donation pick-up.



VISIT OUR WEBSITE:

WWW.WALTERRMUSTYHOMESFORAUTISM.COM



*A 501(c)3
not-for-profit
charity*

Walter R. Musty
Homes For Autism Foundation

Charity Golf Tournament

"The Wally"

Saturday June 8, 2024

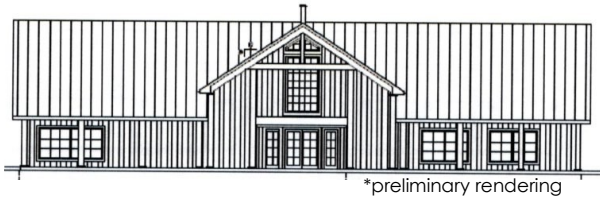


**1964 Folsomdale Road
Cowlesville, NY 14037**



**SPONSORSHIP
OPPORTUNITIES**

Black Water Acres



*preliminary rendering

Walter R. Musty Homes for Autism has partnered with Arc of Erie County to create and develop the first all-inclusive farm community in WNY located in Alden.

"Black Water Acres is an open canvas upon which we will create an accessible, integrated, and clinically-informed space for learning and exploration. While unique to Erie County, our vision for this project builds upon the example set by Ohio's Bittersweet Farms, a farm-based program for adults with autism.

We will transform this vacant land into a fully adaptive farm and four-season community space for adaptive workforce training, outdoor recreation, accessible horticulture, and rehabilitative services. In Black Water Acres, we see a chance to create sensory-informed environments and programming with the opportunity to experience nature and take advantage of the well-established mental health benefits of regular access to green spaces.

The first phase in development is the construction of the Main Building, a 12,000 square foot day habilitation and vocational training space which includes a commercial teaching kitchen and a community space shared with residents of a neighboring senior housing community. This Main Building will also host respite and community support programs, extending opportunities to children, caretakers and the community. We plan to vertically integrate our vocational training, including every step from planting and harvesting to cooking and sale, to offer robust career exploration options. With both a community garden and accessible greenhouses, Black Water Acres will provide growing space and meaningful inclusion for the people we support as well as community members. "

<https://www.arceriecounty.org/blackwateracres>

Thank you for all your support and generosity. Without our community, this wouldn't be possible.

Cindy Wetzl, Mother of 2 autistic sons
Board Member



LEVELS OF SPONSORSHIP:

Deadline to be on signage: 5/20/2024

Tournament Sponsor—\$3,000

- Sponsorship of all contest holes.
- Logo/Name/Website on event sign and registration table sign
- Opportunity to put your promotional item with golfer welcome gift
- Logo/Name/Website on all our social media & website
- Name listed in the event brochure and featured at all 2024 WRM fundraising events

Corporate Sponsor —\$1,000

- Sponsorship of Dinner
- Logo/Name/Website in dining area, on event sign, & website
- Name listed in the event brochure

Eagle Sponsor—\$500

- Sponsorship of Lunch and Beverages
- Logo/Name in dining area, on event sign, & website
- Name listed in the event brochure

Par 3 Sponsor—\$300

- Sponsorship of Golf Carts
- Logo/Name on each cart, event sign, & website
- Name listed in the event brochure

Contest Sponsor—\$150

- Logo/Name at contest holes on colored sign
- Logo/Name on event sign and website
- Name listed in the event brochure

Tee Sponsor—\$100

- Logo/name on colored signage on the course.
- Logo/Name on event sign and website
- Name listed in the event brochure

SPONSORSHIP FORM

Please send this portion back with your donation. Thank you!

Circle Donation Method:

CHECK / CASH / VENMO

- \$3,000 Tournament Sponsor**
- \$1,000 Corporate Sponsor**
- \$500 Eagle Sponsor**
- \$300 Par 3 Sponsor**
- \$150 Contest Hole Sponsor**
- \$100 Tee Sponsor**
- Custom Monetary \$ _____**
- Raffle Donation**

TEAR HERE

COMPANY NAME TO BE ON SIGNAGE:

CONTACT PERSON:

ADDRESS:

E-MAIL:

PHONE #:

DON'T FORGET TO EMAIL US YOUR LOGO!